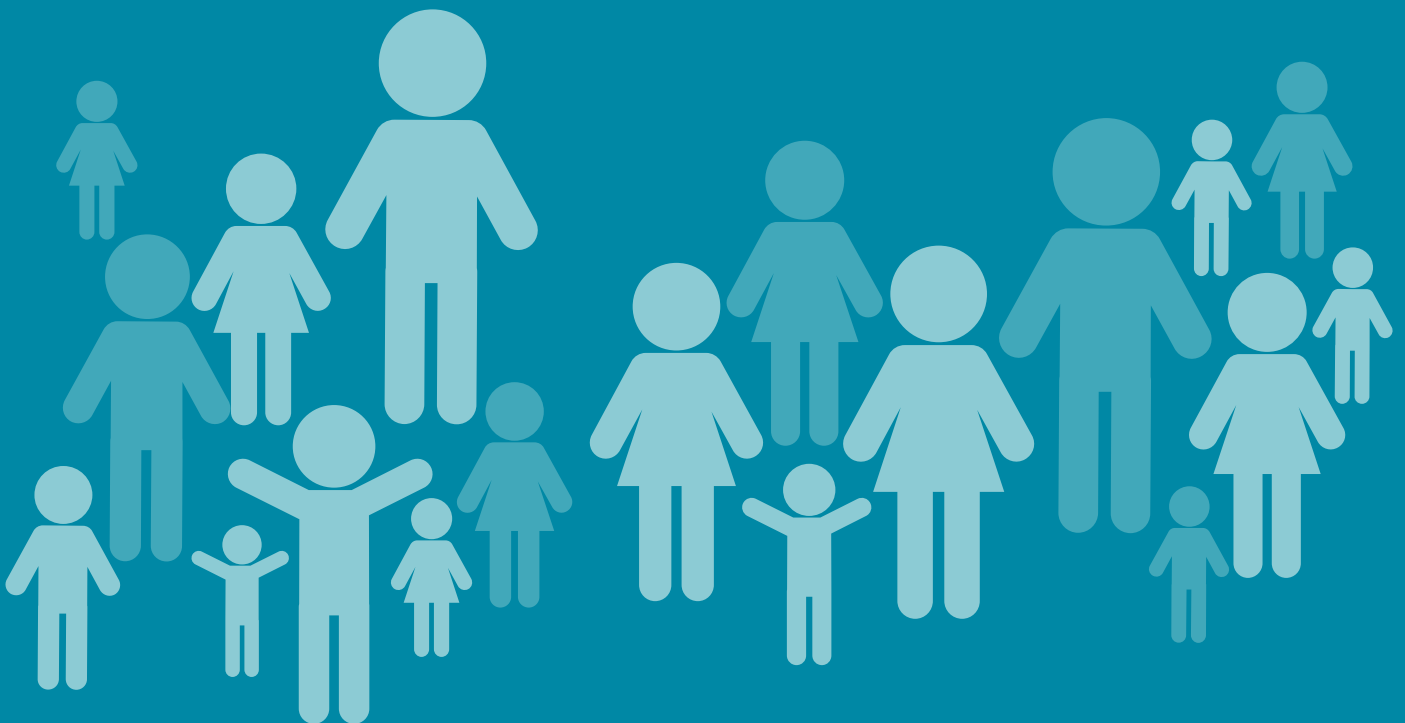


Non-statutory consultation on the potential reorganisation of school places at  
**St John's CE(VC) Infant School  
and Westmoor Primary School.**



Please tell us your views on our proposals.  
The closing date for responses is 24 February 2020

## Why are we making these proposals?

The governing body of St John's CE(VC) Infant School has for some time had the aspiration to become an all-through primary school. The school feel this would have great benefits for their sustainability, as well as educationally, by enabling them to support children and families through the entire primary phase, rather than only for the 3 years at present. Following a series of collaborative discussions between the governing bodies, school leaders, Church of England Diocese of Leeds and the Local Authority, exploring what is technically possible to support the best educational outcomes for children, the following proposals have been shaped. As St John's CE(VC) Infant School is designated with a religious character, the school has sought approval from the Leeds Diocesan Board of Education for this proposal.

## What changes are proposed?

It is proposed that St John's CE(VC) Infant School becomes an all-through primary school with a published admission number (PAN) of 30 and that Westmoor Primary School will make complementary changes where its Key Stage 1 PAN would increase to 60 and its Key Stage 2 PAN would remain 90.

Illustration of the proposed changes:

<b>Current arrangements</b>	Key stage 1 places	Key stage 2 places
St John's CE(VC) Infant School	60	-
Westmoor Primary School	45	90
<b>Total</b>	<b>105</b>	<b>90</b>

<b>Proposed arrangements</b>	Key stage 1 places	Key stage 2 places
St John's CE(VC) Infant School	30 (-30)	30 (+30)
Westmoor Primary School	60 (+15)	90
	<b>90</b>	<b>120</b>

## What does this mean for school places in the area?

The basic need for school places is not planned at a school level, it is planned in local areas agreed with the Department for Education. The illustration below shows the impact of the proposal at Dewsbury West school place planning area level:

<b>Dewsbury West planning area</b>	Key stage 1 places	Key stage 2 places	Mismatch KS1 to KS2
Current	435	413	-22
Future	420 (-15)	443 (+30)	+23

This demonstrates a similar scale of mismatch to that which already exists but a reversed situation where more Key Stage 1 places switches to more Key Stage 2 places.

A mismatch between Key Stage 1 and Key Stage 2 places also exists in the neighbouring school place planning area of Dewsbury South as illustrated below:

<b>Wider planning areas</b>	Key stage 1 places	Key stage 2 places	Mismatch KS1 to KS2
Dewsbury South planning area	301	252	-49
Combined Dewsbury West and South	721	695	-26

Taking the school planning areas together, the proposals would reduce the existing mismatch by 23, resulting in a combined difference of 26 fewer Key Stage 2 places.

Currently, there is no basic need evidence to drive the creation of additional places in either planning area. Significant house building is expected from the Dewsbury Riverside strategic development in the future which is likely to change this position. The first pressure from this housing development is likely to be experienced for Key Stage 2 places and this proposal could help delay the timing of this pressure.

### How would the changes be implemented?

The table below illustrates the potential changes over time if St John's CE(VC) Infant School increases its upper age range year on year. The school would retain their Year 3 pupils and reduce their PAN in Reception from 60 to 30. The final planned capacity for the proposed primary school would be reached in the academic year 2027/2028.

St John's CE(VC) Infant School	R	Y1	Y2	Y3	Y4	Y5	Y6	Total
	Infants (KS1)			Juniors (KS2)				
20/21	60	60	60					180
21/22	30	60	60	60				210
22/23	30	30	60	60	60			240
23/24	30	30	30	60	60	60		270
24/25	30	30	30	30	60	60	60	300
25/26	30	30	30	30	30	60	60	270
26/27	30	30	30	30	30	30	60	240
27/28	30	30	30	30	30	30	30	210

The table below illustrates the potential changes over time if Westmoor Primary School increases its PAN to compensate for the reduction in PAN at St John's CE(VC) infant school. The final planned capacity for the primary school would be reached in the academic year 2023/2024.

Westmoor Primary School	R	Y1	Y2	Y3	Y4	Y5	Y6	Total
	Infants (KS1)			Juniors (KS2)				
20/21	45	45	45	90	90	90	90	495
21/22	60	45	45	90	90	90	90	510
22/23	60	60	45	90	90	90	90	525
23/24	60	60	60	90	90	90	90	540

St John's CE(VC) Infant School has additional class bases available in an ex-caretaker's house and can create a temporary classroom to manage the bulge. Westmoor Primary School have planning permission in place for a two-class extension. In both cases the schools have sufficient funds to undertake this work

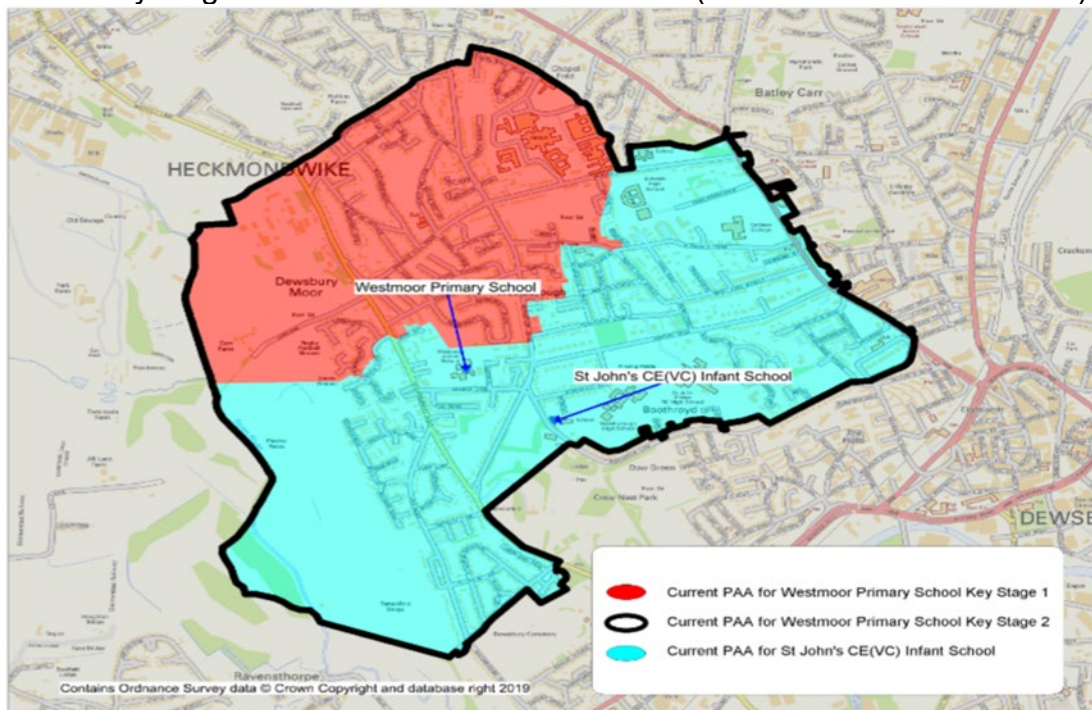
### What does this mean for future admission arrangements?

There would be fewer places available for Reception intakes at St John's CE(VC) Infant School (down from 60 to 30 places). Parents who secured a place for their child would no longer need to apply for a Key Stage 2 (junior school) place unless it was their choice to change schools.

There would be more places available for Reception intakes at Westmoor Primary School (up from 45 to 60 places). As is the case now, parents who secured a place for their child and in the future would not need to apply for a Key Stage 2 (junior) place unless it was their choice to change schools.

There are no proposals to change the priority admission areas (PAAs). The map below illustrates the current PAAs.

- St John's CE(VC) Infant School PAA is highlighted in blue
- Westmoor Primary School has a Key Stage 1 PAA highlighted in red and a key stage 2 PAA which combines the two (illustrated with a black line).



### What would happen to current pupils at the schools?

No pupils would be displaced by these proposals.

Pupils already attending St John's CE(VC) Infant School would no longer need to apply for a Key Stage 2 (junior school) place unless it was their choice to change schools.

Pupils attending Westmoor Primary School will not be affected. As is the case now, pupils attending Westmoor Primary School will not need to apply for a Key Stage 2 (junior school) place unless it was their choice to change schools. However, in line with current policy, there would be no automatic transfer from the nursery to the Reception class and parents would still need to complete an application form at the appropriate time.

### **Why create an all-through primary school at St John's CE(VC) Infant School?**

Over a number of years the council has been willing to explore opportunities for reducing transition points and has worked with school leaders, governing bodies and the Church of England Diocese of Leeds to establish all-through primary schools. The establishment of all-through primary schools is intended to improve the educational standards attained by children through better and more flexible management of learning, without a change of school at age 7. Single all-through institutions can establish longer-term relationships with pupils and families, provide more opportunities for staff development and better manage resources to support learning and smooth transition to each stage of learning.

### **Leeds Diocesan Board of Education**

The members of the Leeds Diocesan Board of Education welcome and support the collaborative way in which the proposals have been developed between St John's CE(VC) Infant School and Westmoor Primary School, Kirklees Council and the Diocese. In this case the law states that the governing body of St John's CE(VC) Infant School are the proposer for the required statutory proposal to change the age range of the school and as a voluntary controlled school the council is the decision maker. As a school designated as having a religious character St John's CE(VC) Infant School must seek approval to make such a proposal from the Leeds Diocesan Board of Education.

### **Welcoming your views**

We want to know your views about

- St John's CE(VC) Infant School to reduce its PAN from 60 to 30 and to increase its upper age range from 4-7 to 4-11 years old
- Westmoor Primary School to increase its KS1 PAN from 45 to 60
- Continuing with the existing priority admission area arrangements

### **What happens next?**

This consultation is open from 27 January 2020 until 24 February 2020. You have until then to express your views in writing, or in person at the consultation events. Once the consultation has finished, the feedback received will be reported to Kirklees Council's Cabinet (the council's main decision making body), who will decide whether to move to the next stage. This would mean the publication of legal notices and another chance to view the proposals and comment on them before a final decision is made. The following table shows the next steps involved along with indicative timelines and would be dependent upon Cabinet approval to move to each stage.

## Activity Date

Activity	Date <i>* These dates are indicative and may change; they are also subject to Cabinet approval.</i>
Consultation and engagement (non-statutory)	<b>27 Jan 2020 until 24 Feb 2020</b>
Report back to Cabinet on the non-statutory consultation and seek Cabinet approval to move to next stage	<b>24 March 2020*</b>
Publication of statutory notices and proposals and period of representation (formal consultation on statutory proposals)	<b>20 April 2020 until 17 May 2020</b>
Kirklees Council Cabinet take a final decision regarding the proposals	<b>16 June 2020*</b>
<b>Application to the Schools Adjudicator for PAN variation for 2021/22</b>	<b>23 June 2020</b>
<b>Implementation</b>	<b>1 September 2021</b>

## Consultation events

All the listed informal events are open to families of pupils attending either school, members of the community and anyone else who would like to find out more and discuss the proposals regarding the potential reorganisation of school places at St John's CE(VC) Infant School and Westmoor Primary School. Please come along and see us between the times indicated below.

Date	Venue	Time
3 <sup>rd</sup> February 2020	<b>Westmoor Primary School</b>	2:45pm to 3:45pm
11 <sup>th</sup> February 2020	<b>St John's CE (VC) Infant School</b>	2:45pm to 3:45pm
		6:00pm to 7:00pm

In addition to these events there will be opportunities for consultation with staff and governors. Council officers will be present to answer questions and hear your views. As the people most concerned with your children's education, we want to know what you think. You can take part in the consultation on our website, [www.kirklees.gov.uk/schoolorganisation](http://www.kirklees.gov.uk/schoolorganisation). Alternatively, you can complete and return the attached response form.

**Response form** please send this form or a letter to:

**By post:** FREEPOST Kirklees Council, School Organisation & Planning (Postage is free; you do not need a stamp).

**In person:** At one of the consultation drop-in sessions or hand it in at one of the schools.

**Online:** You can also take part in the consultation on our website:

**[www.kirklees.gov.uk/schoolorganisation](http://www.kirklees.gov.uk/schoolorganisation)**

You can also email us your queries regarding the proposals in this consultation document. Please email your queries to: [schoolorganisation@kirklees.gov.uk](mailto:schoolorganisation@kirklees.gov.uk)

Please make sure you respond by **24th February 2020** to ensure that your views are heard.

Q1) Do you support or oppose the proposals for St John's CE(VC) Infant School to reduce its PAN from 60 to 30 and to increase its upper age range from 4-7 to 4-11 years old. Please tick one of these boxes

Strongly support	Support	Neither support nor oppose	Oppose	Strongly oppose	Don't know

Why have you decided that is your view? Please tell us about it along with anything else you would like us to consider relating to this proposal.

Q2) Do you support or oppose the proposals for Westmoor Primary School to increase its KS1 PAN from 45 to 60?

Strongly support	Support	Neither support nor oppose	Oppose	Strongly oppose	Don't know

Why have you decided that is your view? Please tell us about it along with anything else you would like us to consider relating to this proposal.

Q3) If the other proposals are approved, do you support the current priority admission areas (PAAs) remaining unchanged?

Strongly support	Support	Neither support nor oppose	Oppose	Strongly oppose	Don't know

Why have you decided that is your view? Please tell us about it along with anything else you would like us to consider relating to this proposal.

## About you

This section asks you for some information that will help us start to analyse the results of the survey and to see who has taken part. You will not be identified by any of the information that you provide.

I am a: (please tick and complete all those that apply to you)

Parent/carer  your child's/children's school(s):

Pupil  your school:

Governor  your school:

Member of staff  your school:

Local resident  please tell us:

Other  please tell us: